

SUPPLEMENT

Phylogenetic biogeography of Hamamelidaceae s. l. based on molecular data

Alexey V. Bobrov, Maxim S Roslov., Mikhail S. Romanov

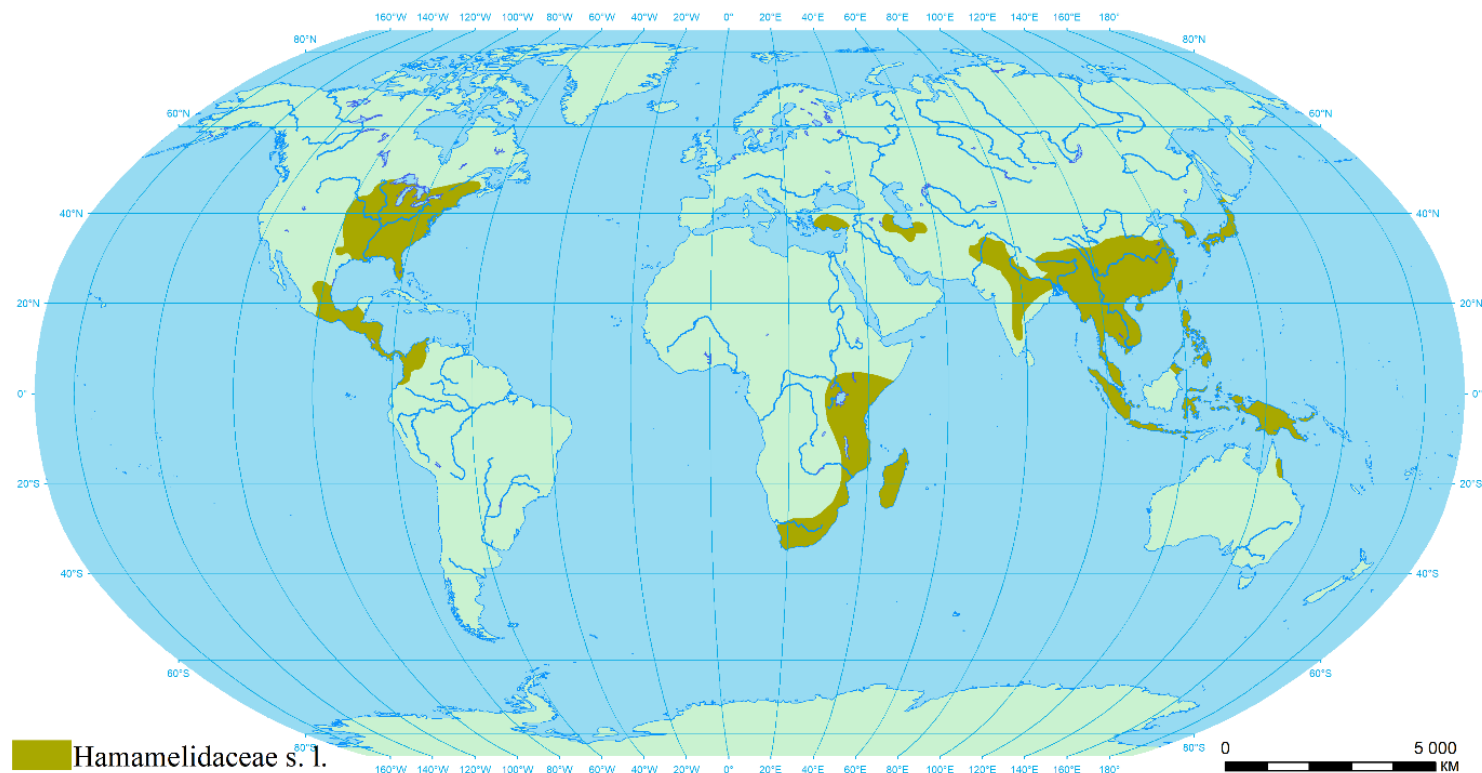


Fig. 1. Current distribution of the Hamamelidaceae s. l. family (drawn by the authors based on: Takhtajan, 1980; Zhang and Lu, 1995; Racotobe, 1996; Li, 1997; Shatilova et al., 2016; Stevens, 2017).

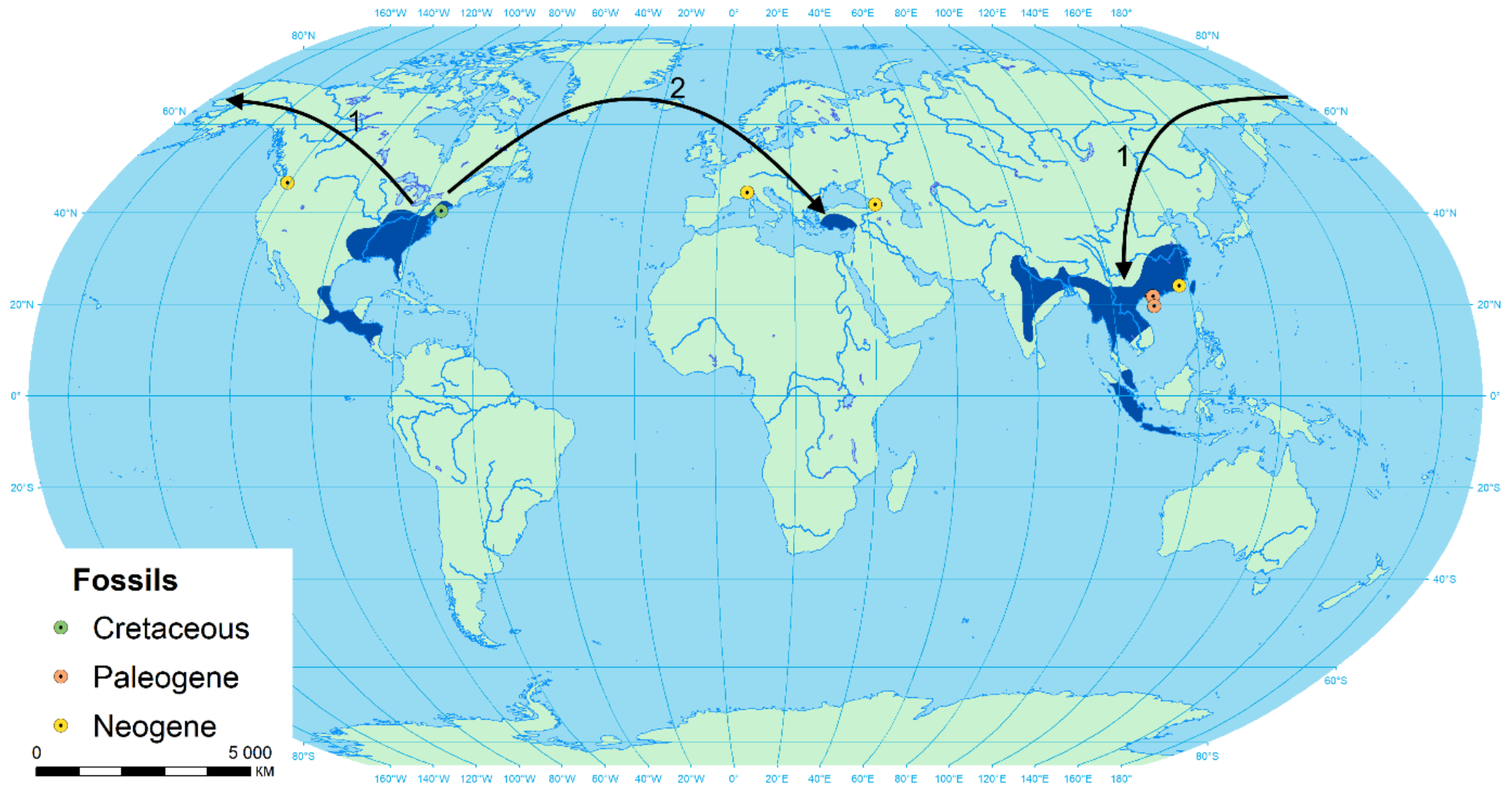


Fig. 2. Pattern of the Altingiaceae family dispersal. Numbers and arrows represent the order and migration routes (drawn by the authors).

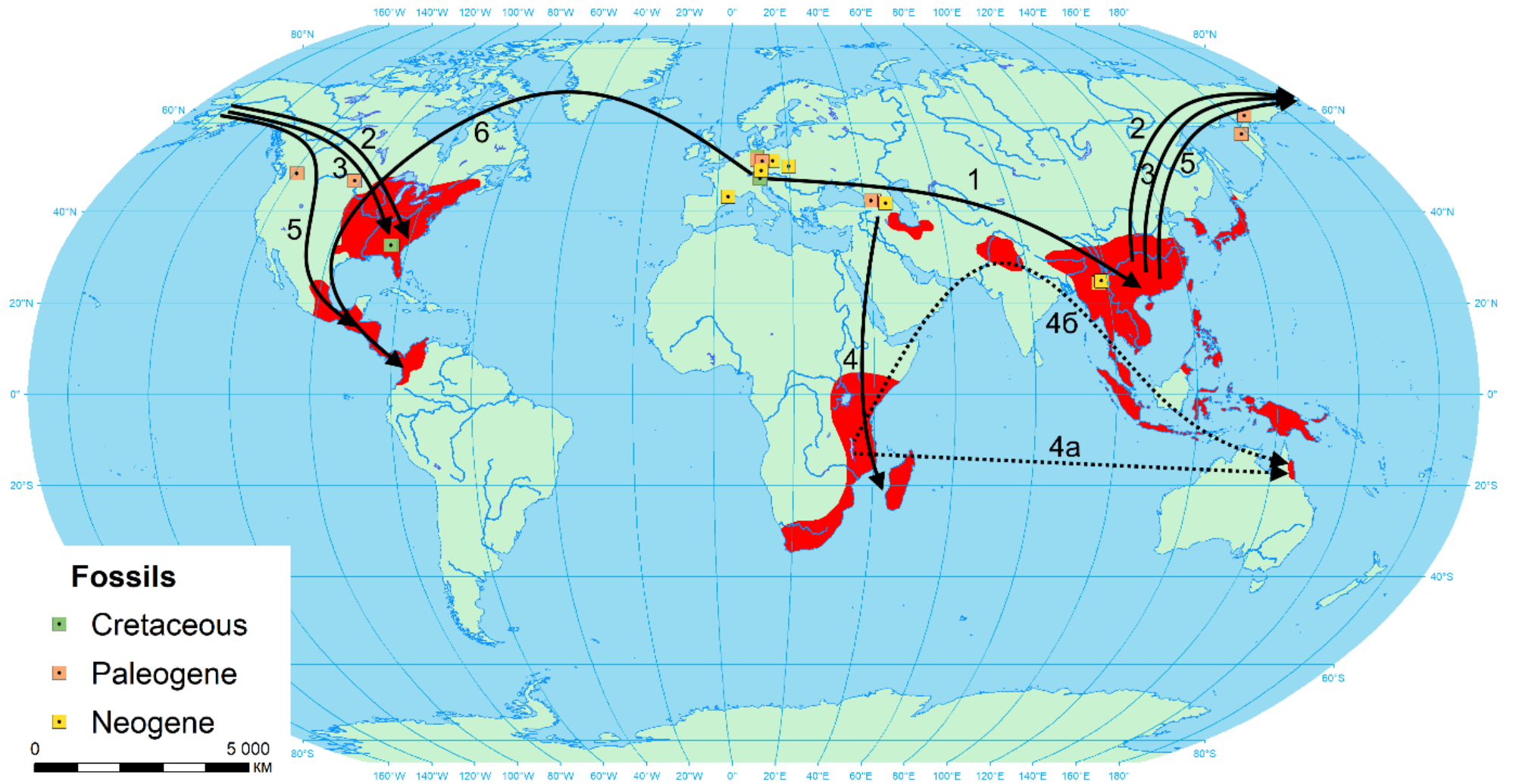


Fig. 3. Pattern of the Hamamelidaceae s. s. family dispersal. Numbers and arrows represent the order and migration routes (drawn by the authors).