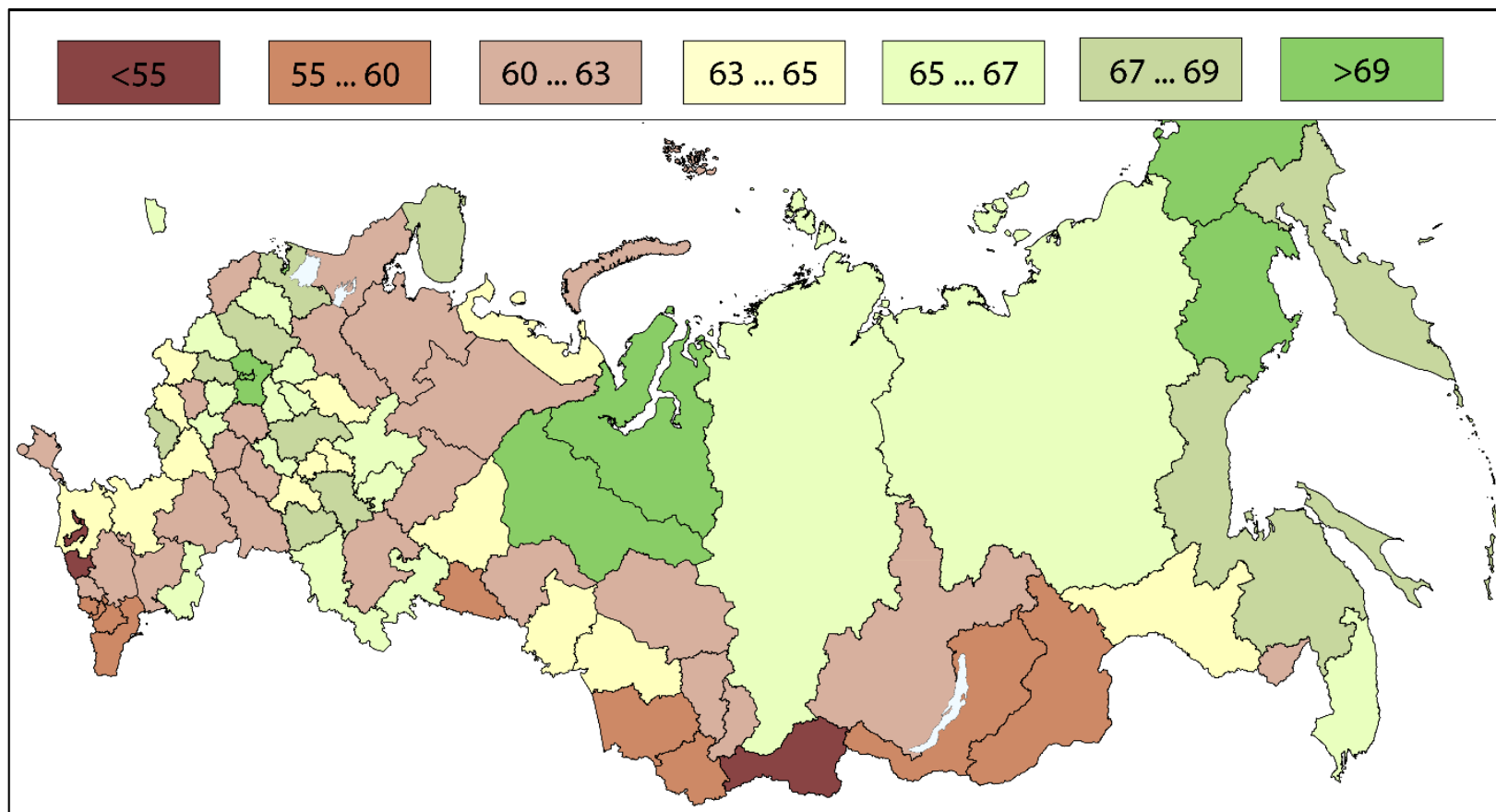


Supplement 2.1-2.13

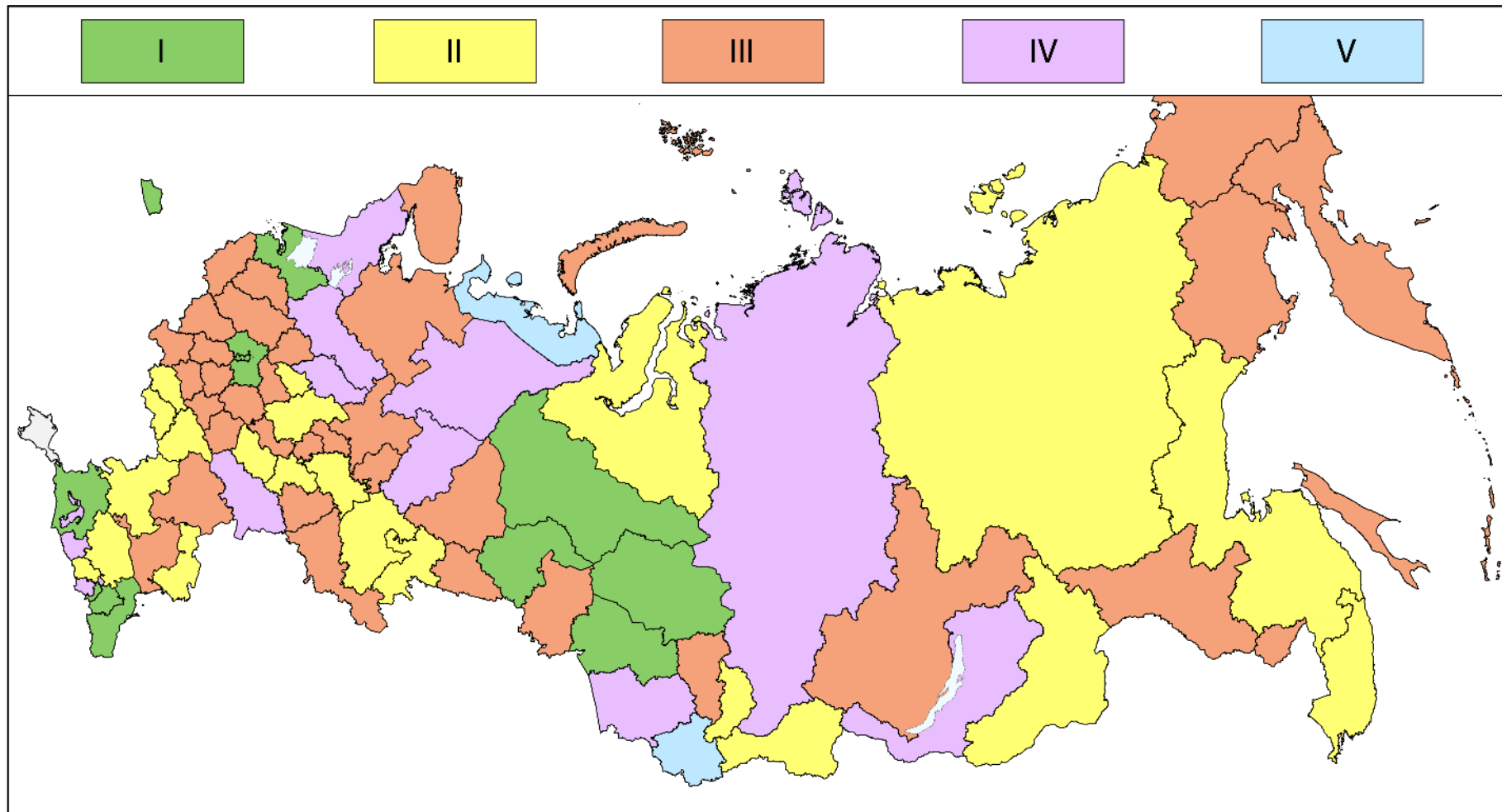
The dynamics of employment and regional labour markets situation of Russia in 2010-2017.

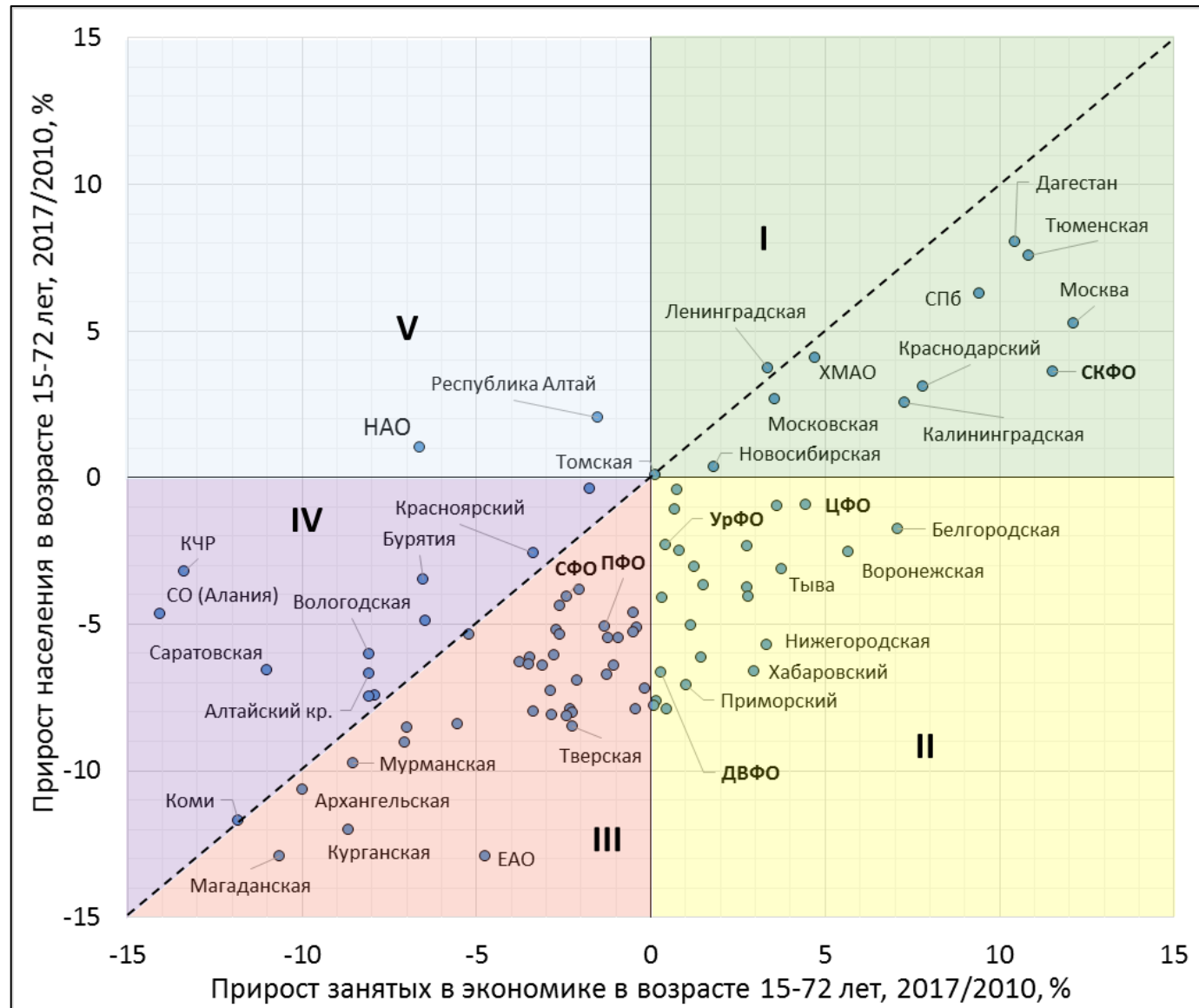
Evgeniy V. Antonov

Supplement 2.1 Regional employment level of population in Russian Federation in 2017, %. Source: compiled according to the FSGS

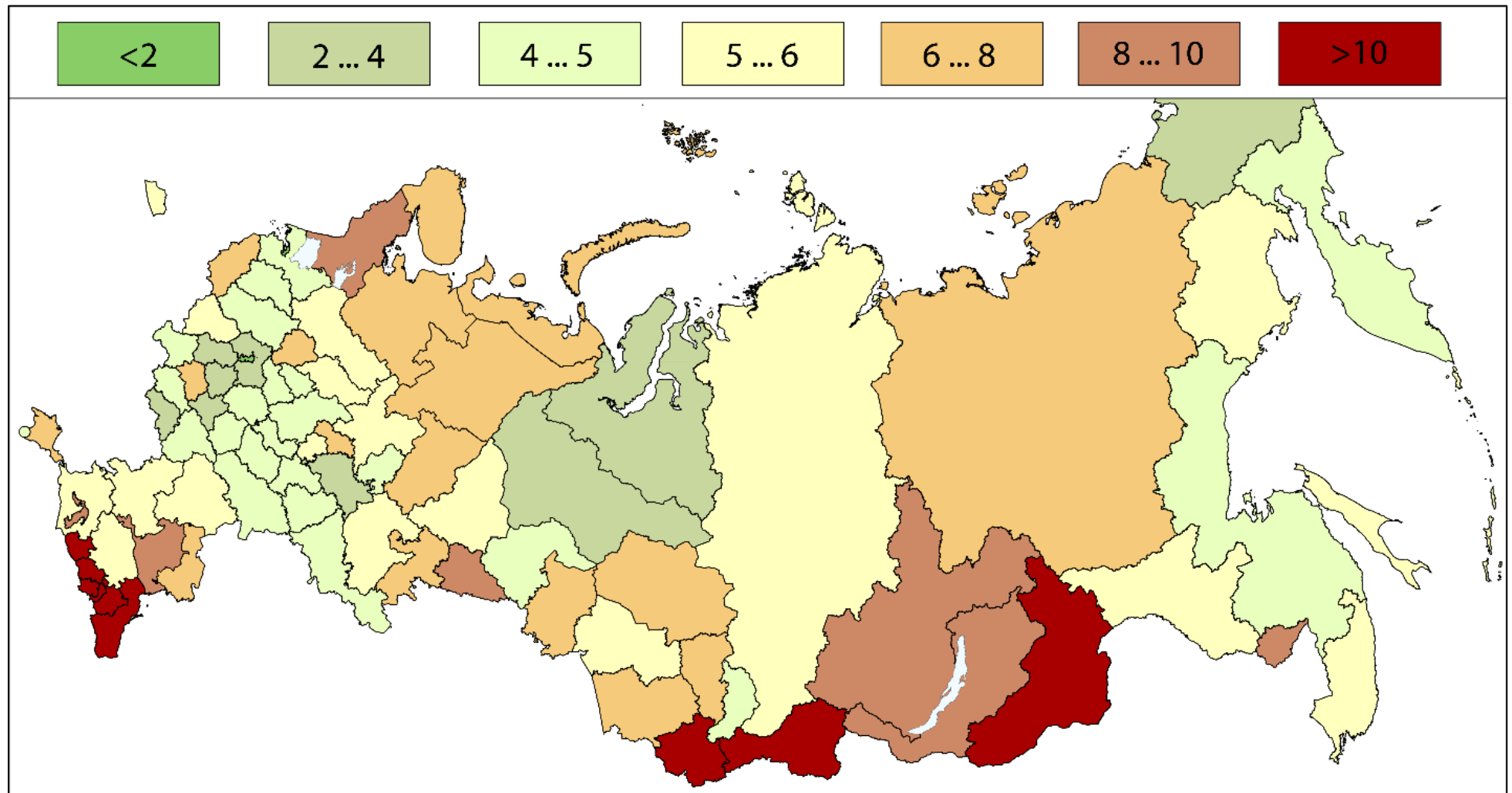


Supplement 2.2 Types of regions according to the dynamics of employment in 2010-2017. Source: calculated according to the FSGS of the Russian Federation. Note: outside of the graph area (x-axis; the y-axis) out of the Republic of Ingushetia (+102,6; +20,9), Chechen Republic (+71.0 per;+15,0), Kabardino-Balkar Republic (+17,3;and 2.8). The position below the dotted line means an increase in employment, over-reduction over the period. Source: compiled by the author according to the Rosstat.

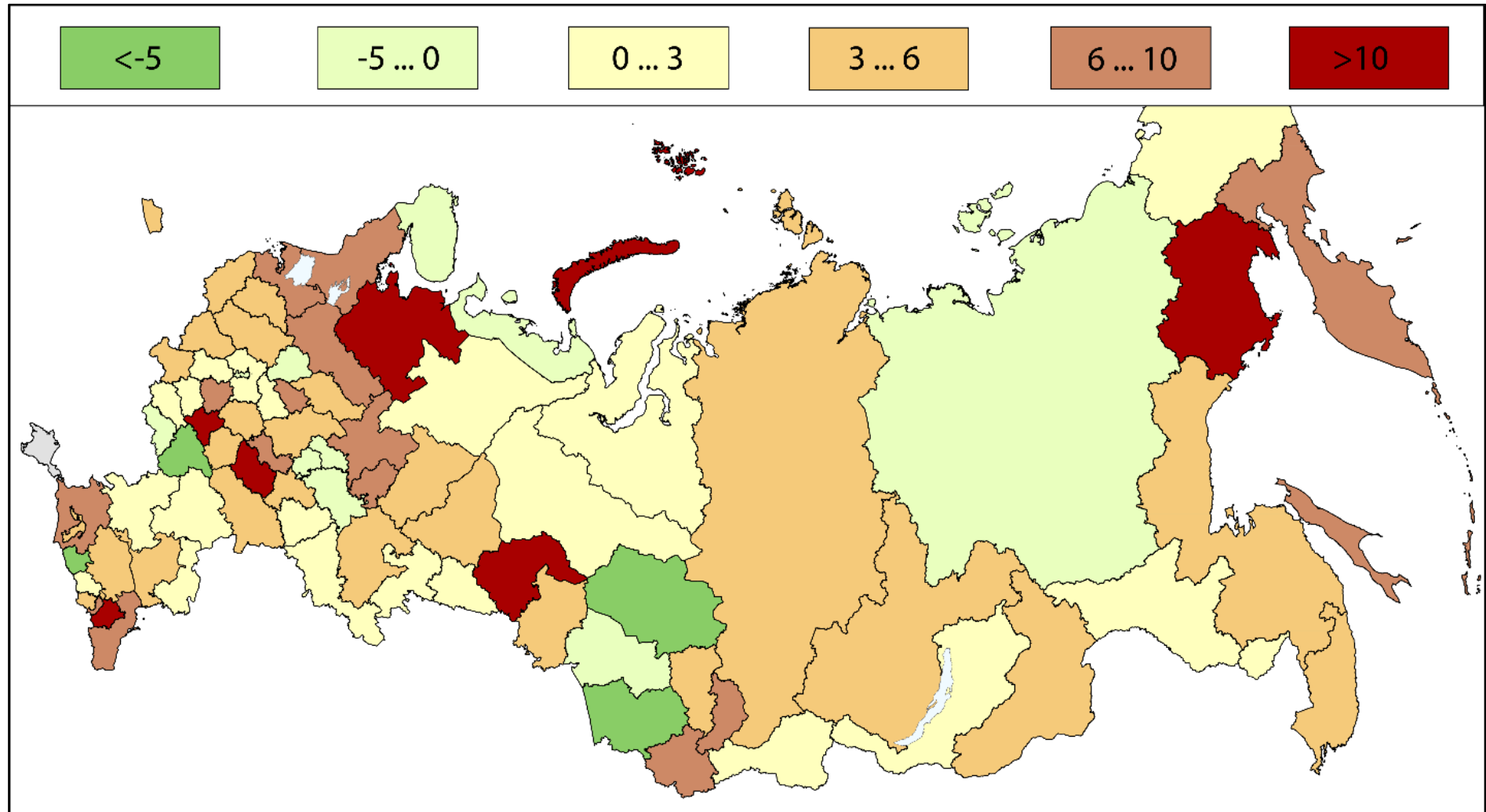




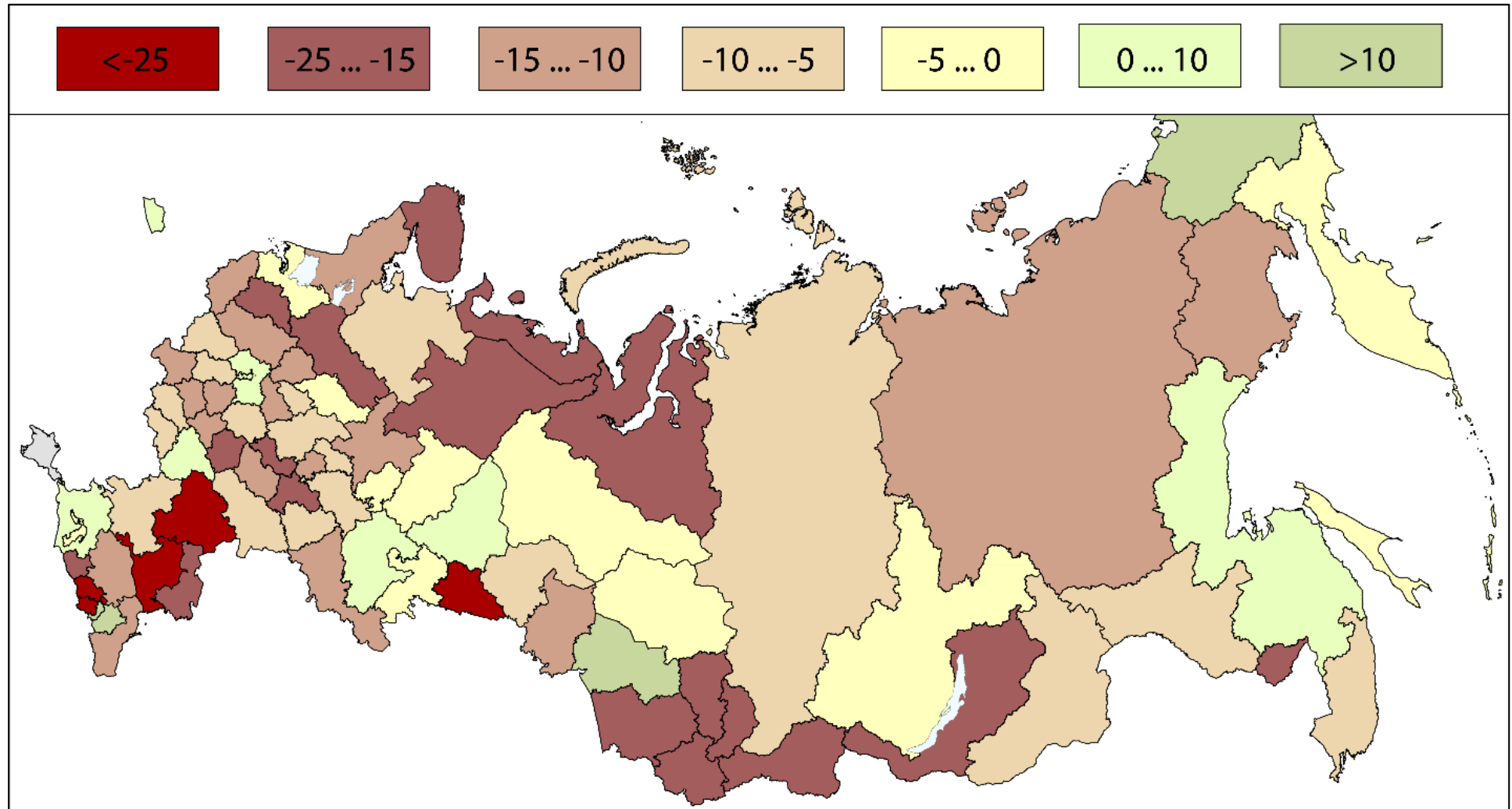
Supplement 2.3 Unemployment rate (according to ILO methodology) in 2017, %. Source: compiled according to the FSGS.



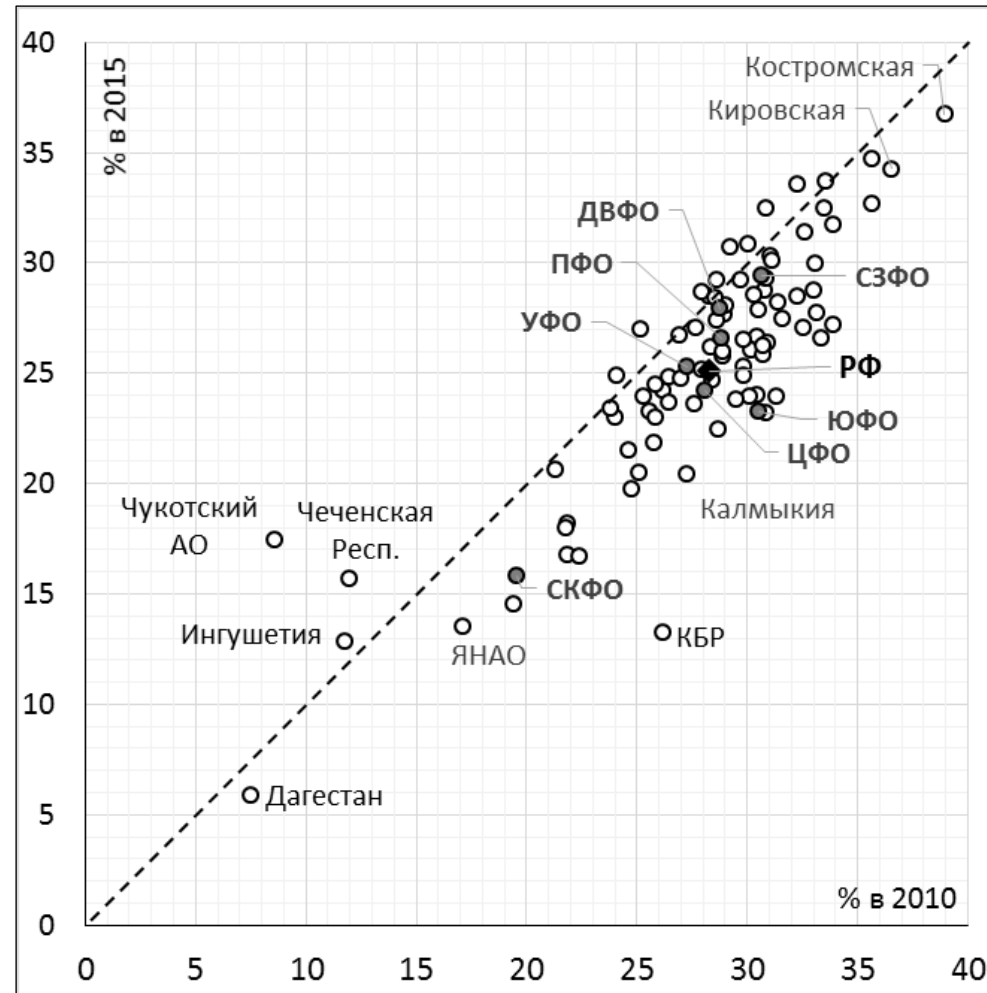
Supplement 2.4 The increase in the share of informal employment (employed informally to the total number of employed population in the region) for the period 2010-2017, % of points from the level in 2010. Source: compiled according to the FSGS.



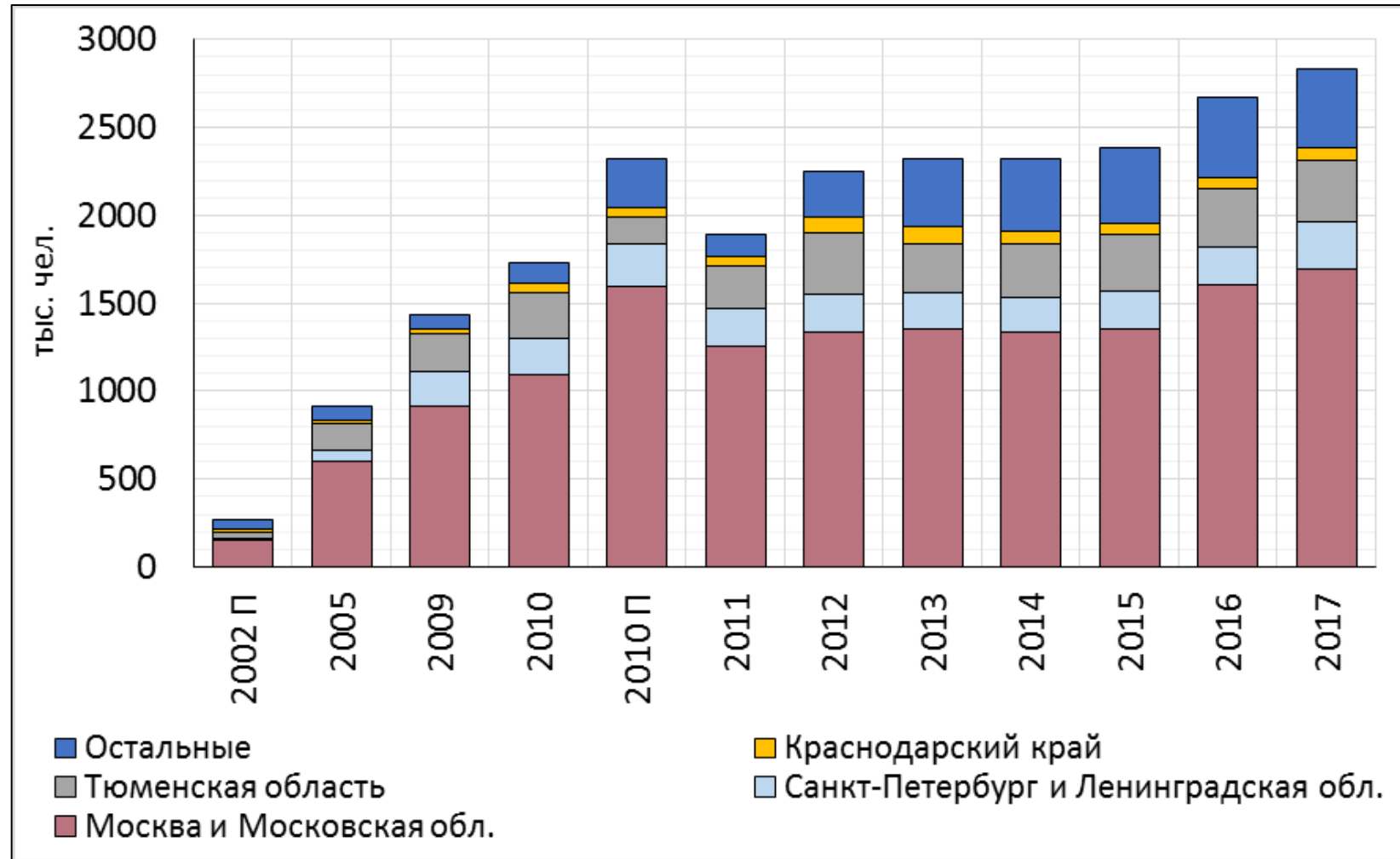
Supplement 2.5 Increase in the number of employees in SMEs and sole traders in 2015 compared to 2010, %. Source: compiled according to SNDCP 2010 and 2015.



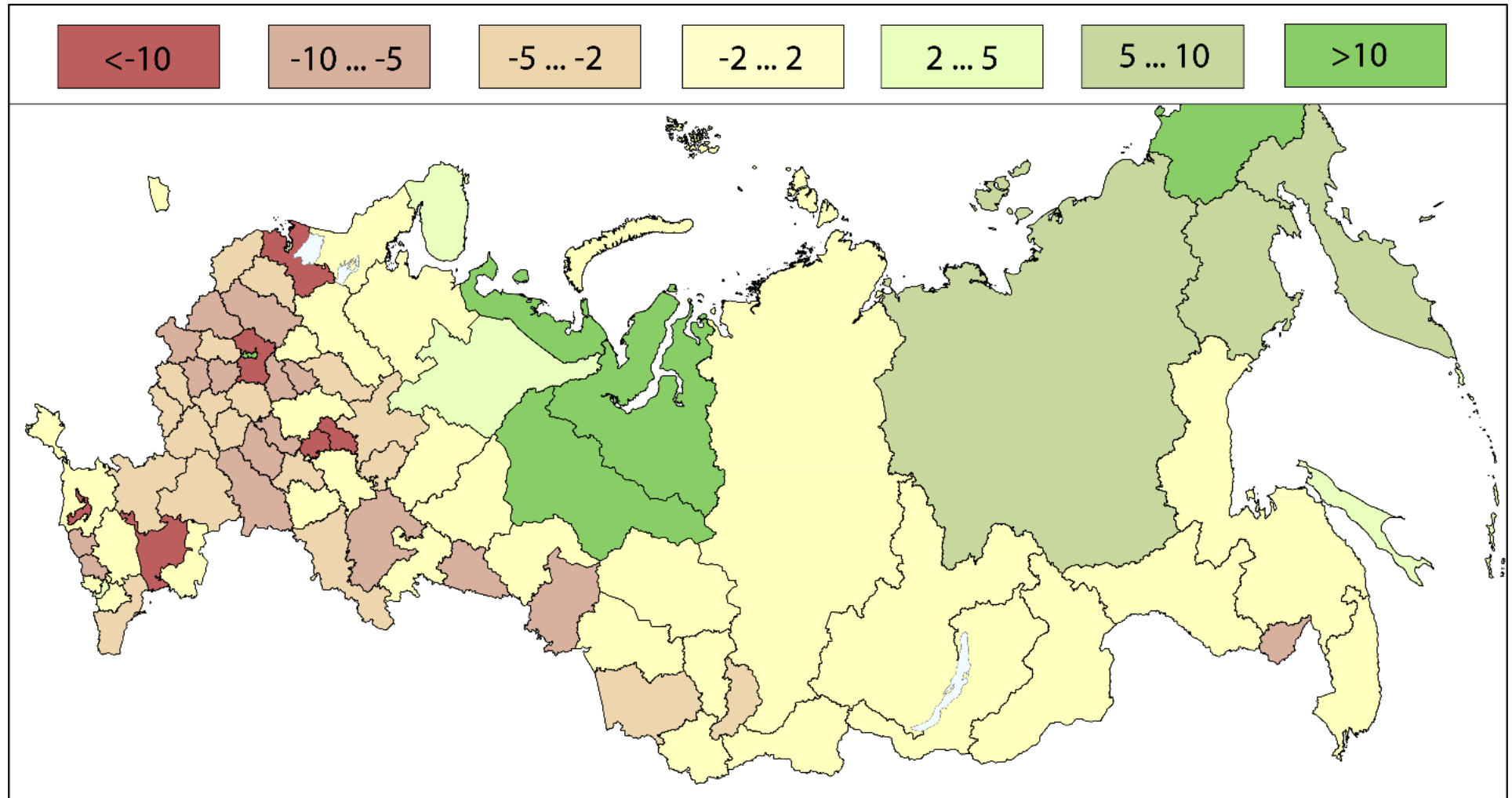
Supplement 2.6 Dynamics of the share of employment in SMEs of employment in the economy in 2010-2015 Source: calculated according SINDCP 2010, 2015 and FSGS.

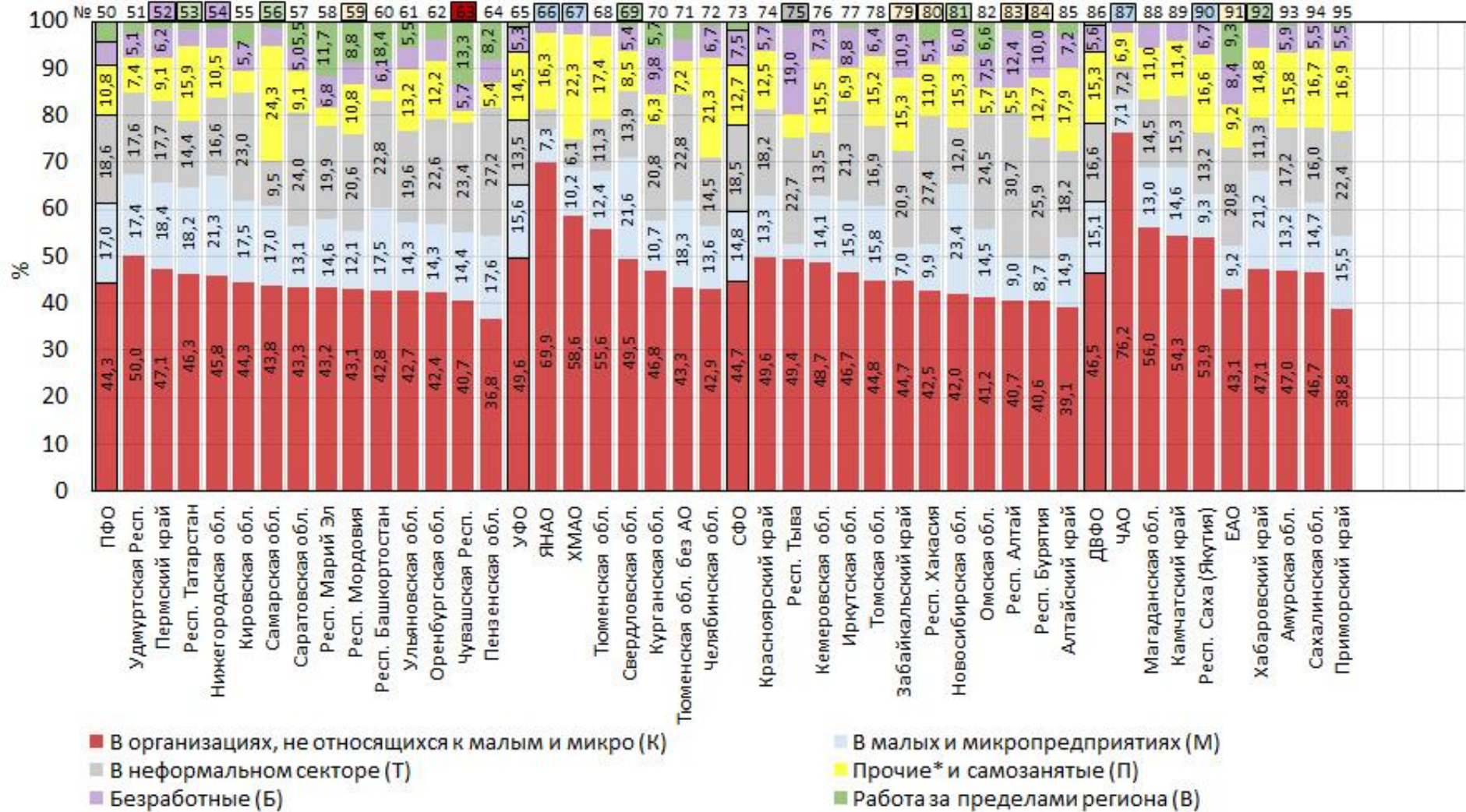


Supplement 2.7 Dynamics of the number of interregional labor migrants in the main regions-acceptors of labor migrants (at the place of arrival) in 2002-2017. Source: data of Russian Census-2002, 2010, labor force survey (population survey on employment issues) 2005, 2009-2010, 2011-2017.

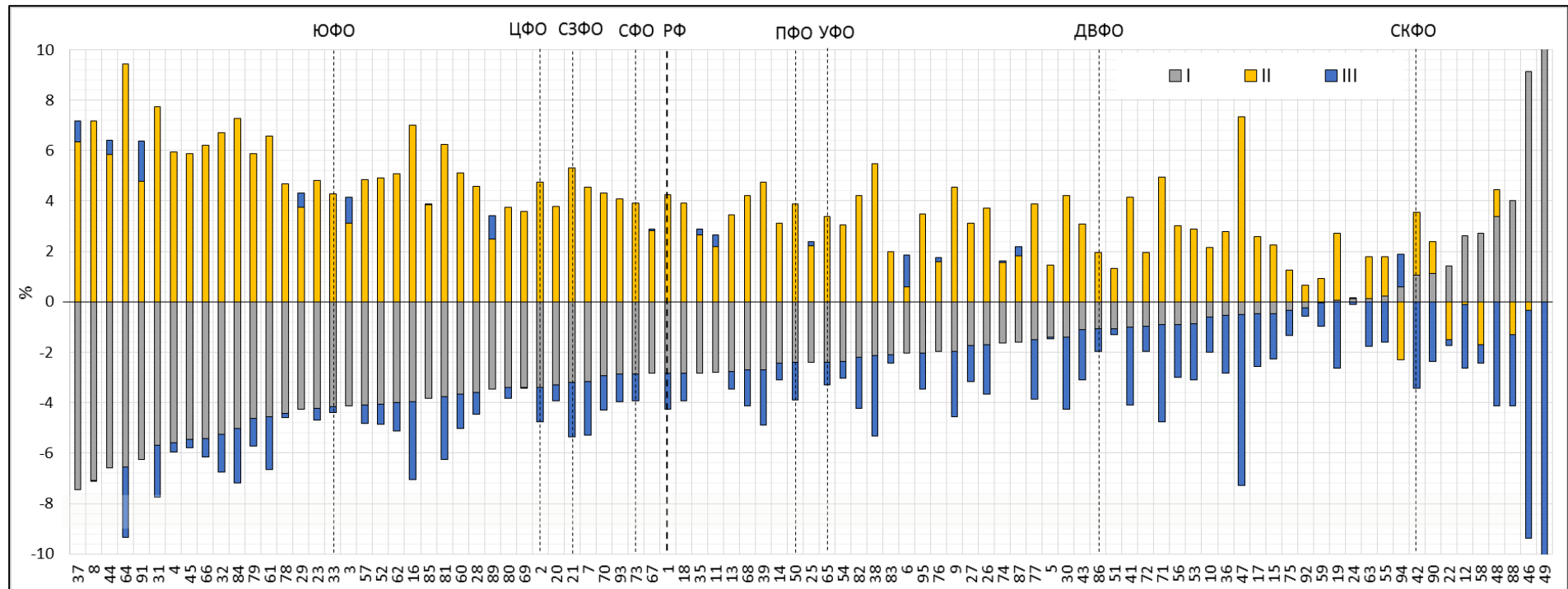


Supplement 2.8 The ratio of the balance of interregional labor migration to the number of employed population in 2017, %. Source: compiled according to the FSGS.

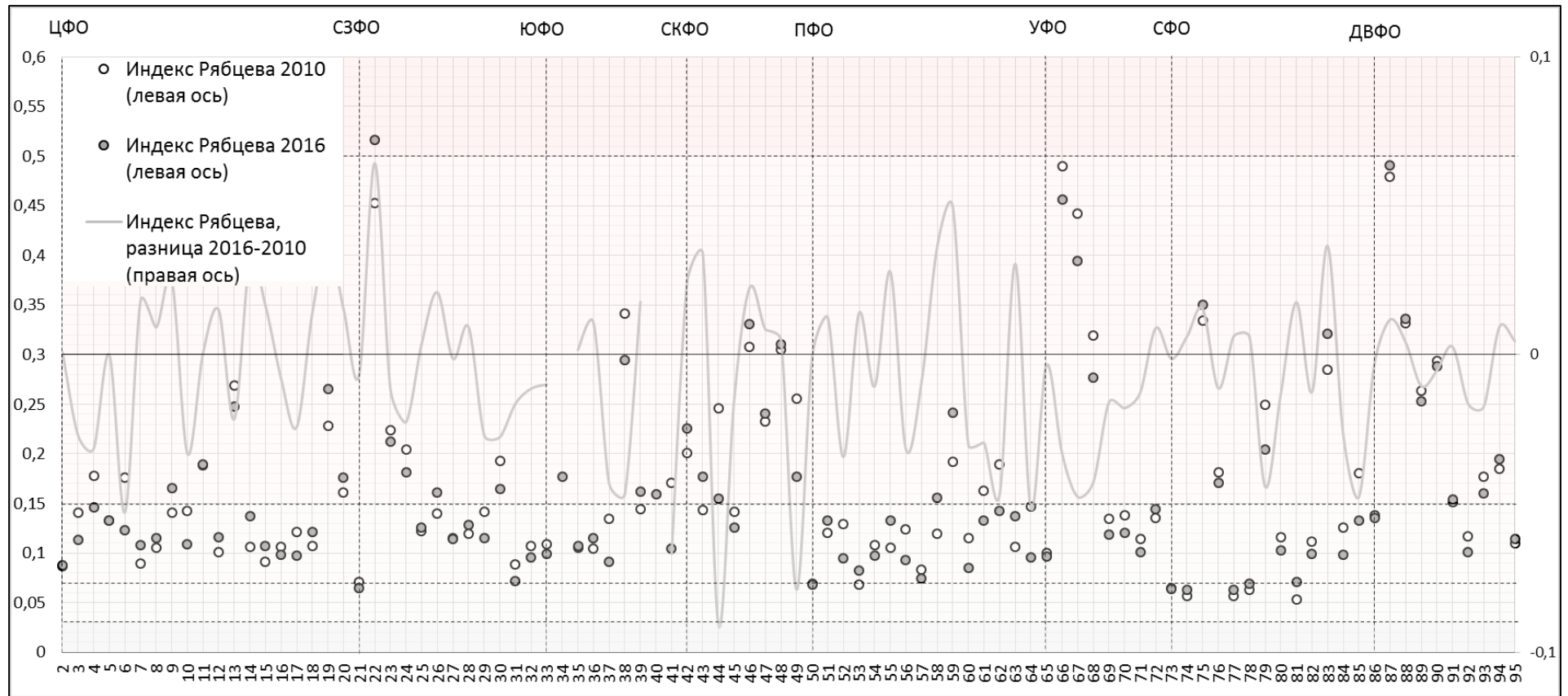




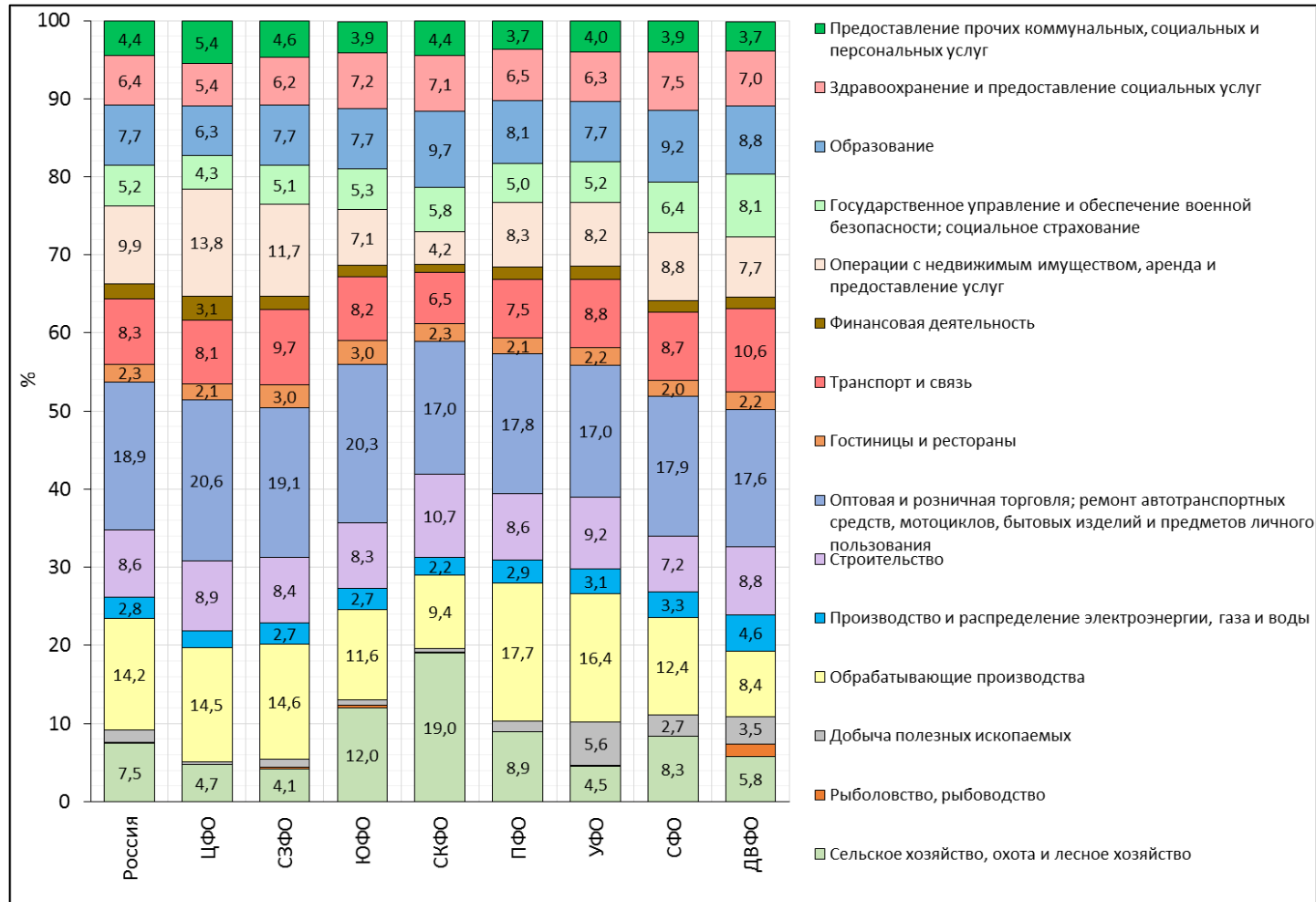
Supplement 2.10 Increase / decrease in the share of employment by industry groups in the regions of Russia for the period 2010-2016, % Source: calculations according to the FSGS of the Russian Federation. Note: chart for the Republic of Ingushetia (№49; +14,8; +5,9; -20,7 for I, II and III group of industries, respectively) goes beyond the scope of construction. The region numbers are given according to the numbering in supplement 2.9.



Supplement 2.11 Dynamics of the index Ryabtseva (structural differences) in the sectoral structure of employment in the regions of Russia in relation to the national average 2010-2016 Source: calculations on data FSGS the Russian Federation. Note: the numbers of regions and Federal districts are given in accordance with the numbering in supplement 2.9.



Supplement 2.12 The structure of employment in the Russian Federation and Federal districts in 2016 by industry OKVED. Source: data of Rosstat.



Supplement 2.13. Change in the share of employed in SMEs (%) of employed in the economy by key industries in 2010-2015 in federal districts.

Source: calculated according to SNDSMP 2010, 2015 and the FSGS the Russian Federation

County	Total		Agriculture		Processing industry		Wholesale and retail trade		Service provision ¹		Construction		Transport and communication	
	2010	2015	2010	2015	2010	2015	2010	2015	2010	2015	2010	2015	2010	2015
Number of employed, thousand people														
RF	19082	18440	1389	1000	2730	2766	6477	5881	3262	3441	1874	1781	686	1325
CFC	5254	5132	267	192	792	833	1744	1591	1049	1101	513	477	170	356
NWFC	2085	2139	91	62	306	328	685	620	386	456	218	226	84	176
SFC ²	1867	1730	197	149	246	229	629	564	267	277	188	157	79	134
NCFC	648	592	95	82	91	80	235	210	66	69	55	44	24	39
VFC	4120	3775	398	267	636	634	1374	1176	656	651	398	378	147	230
UFC	1646	1623	77	51	225	236	586	524	271	303	175	177	62	132
SibFC	2550	2343	217	152	337	321	896	786	424	419	232	218	88	163
FEFC	913	862	46	35	97	82	328	307	143	134	94	89	32	78
The share of employees in SMEs from those employed in the industry as a whole in the economy (industry),%														
RF	28,3	25,1	21,0	18,0	26,6	26,6	53,6	42,3	60,7	47,5	34,7	27,3	12,9	21,9
CFC	28,1	24,2	20,4	19,0	27,1	27,3	44,5	35,9	52,0	37,8	31,1	24,3	13,0	21,2
NWFC	30,8	29,3	23,1	20,7	28,7	30,9	57,3	44,3	61,1	54,3	38,8	34,6	13,3	25,2
SFC ⁶	30,5	23,2	20,4	16,3	31,5	26,9	54,2	38,0	77,3	53,4	39,8	25,5	16,5	22,2
NCFC	19,5	15,8	14,5	11,5	26,0	22,9	47,7	32,8	55,7	43,1	23,0	11,0	10,4	15,8
VFC	28,8	26,5	23,4	21,2	24,1	25,0	58,5	47,1	66,7	54,8	36,7	30,6	14,5	21,6
UFC	27,3	25,3	20,5	17,6	21,8	22,2	62,3	47,7	64,5	58,0	32,6	29,1	11,9	23,2
SibFC	28,3	26,2	22,3	20,4	28,2	28,7	61,6	49,5	68,7	52,9	38,9	33,7	10,8	21,1
FEFC	27,7	27,1	18,6	19,1	34,4	30,6	58,8	57,1	58,9	53,4	36,3	31,4	9,5	23,4

¹ Section Real estate operations, rental and provision of services² Excluding the Republic of Crimea and the city of Sevastopol